

**ABERDEEN ANGUS**

**Two centuries of change**

# How Angus Breeders have changed the breed over the last 180 years.

- This presentation shows how the Angus breed has changed in the U.K. and throughout the world to meet the ever changing demands of the commercial producers and the consumers.

# Where it all started Hugh Watson's Keillor Farm



# How it all Began

- Hugh Watson is generally recognized as the founder of the breed soon after he acquired the tenancy of Keillor in 1808 when it is reported that he bought the best and blackest animals he could find at the Taranty fair in Brechin. These cattle would have been native cattle which had been bred in Aberdeenshire and Angus for many years. It was from this seedstock that the Aberdeen Angus breed was founded.
- William McCombie of Tillyfour is usually known as the great improver after his steer Black Prince won Smithfield in 1867.
- The third pioneer who was known as the refiner of the breed was Sir George McPherson Grant of Ballindalloch, a herd which is still in existence. and throughout the years has played a leading roll in the breed's development. The work of these three pioneers spanned exactly 100 years.

# Statue at Alford to commemorate the work of William McCombie of Tillyfour



# Ballindalloch Castle home of the oldest Angus Herd in the World



# 1844 Old Jock



# Pre 1900 Unknown





# Enthusiast of Ballindalloch

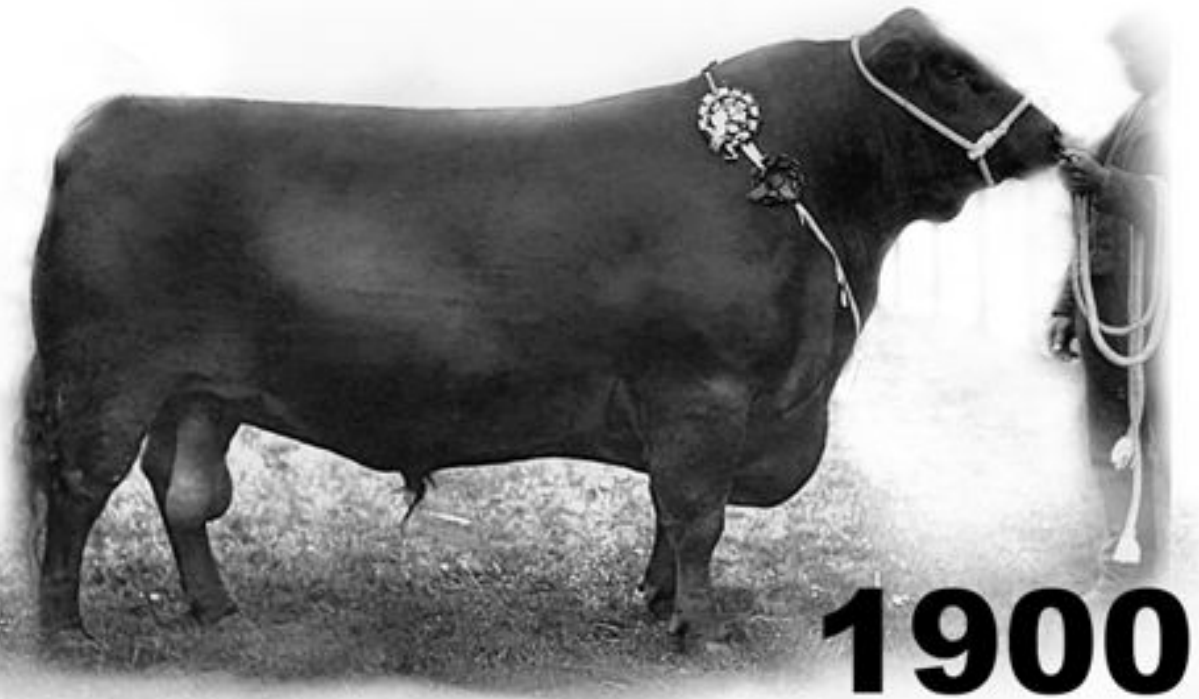


**1894**

# Size of Aberdeen Angus

- Please note the size of the cattle during this period they compare well with the size of the cattle today.
- The next slide give a true picture of the bull's size when you look at the man on the halter.

**DIAZ 3yr old**



# 1925 Quality Marshall



# Start of the reduction in size

- The next slide and for the next 35 to 40 years the cattle got considerably smaller. In the U.K. This was mostly due to the export demand from both North and South America. This move into smaller cattle gained momentum after 1945 when a big export boom took place after the War .
- It was not until the 1970's that any move was made in the U.K. to increase the size of our Angus cattle. By then they had fallen out of favour with the commercial producers who were turning in increasing numbers to the larger Continental cattle. To add to this problem the health lobby against fat demanded a much leaner carcass. During the 60's and 70's it was difficult to get Angus heifers to finish at 350 Kg live wt without getting too fat



# 1944 ESCORT OF NEWHOUSE



# 1947 Perth Judging on Street



**1950 Ervedic of Harvieston sold to  
Canada 6,800 gns 14 month old**





# 1951 Burke Trophy winners Remormon of Douneside & Janet 13<sup>th</sup> of Dalmeny



# 1952 Perth Sale



# 1954 Group sire Protus of Greenyards



**1955 Perth Champion Newhouse Paramount  
sold for record price 11,500 gns**



## Leading herds from 1950 until 1970's

The last slide was the Newhouse herd's first Perth Champion. Newhouse was the dominant herd in the breed from around 1950 until the 1970's. Most of the record breaking cattle sold in the 50's and 60's carried Newhouse bloodlines.

The late Bob Adam was the master breeder of his day and he produced the type of cattle that the lucrative export market demanded. The herd was dispersed in 1982 but its name still appears in pedigrees . Other herds which had an influence during this period were Gaidrew, Barnoldby and Haymount.

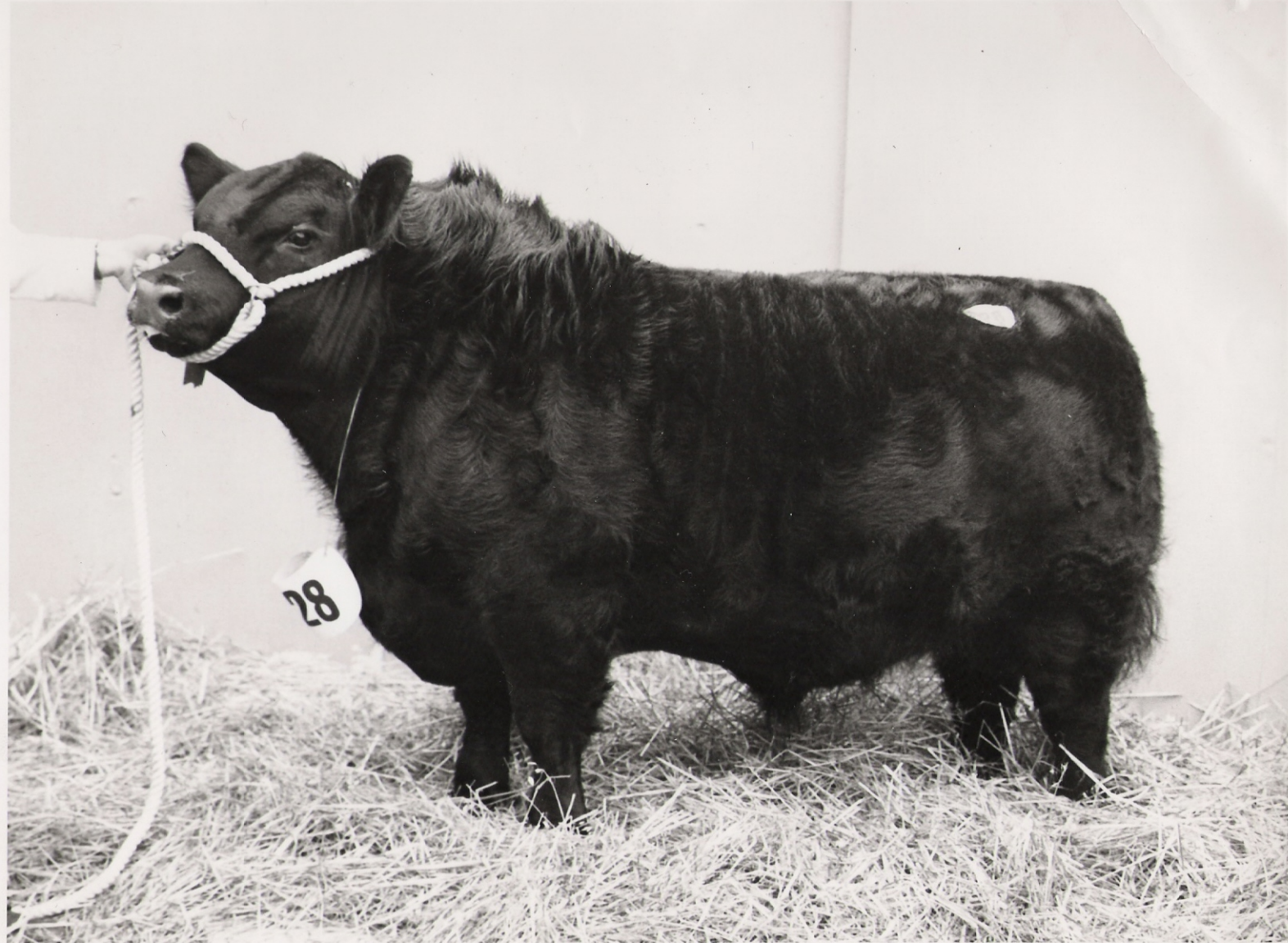
**1960 Newhouse Jubilee Eric sold for record 27,000 gns  
Here Bob Adam and his son Drew show him to Russian visitors**



# 1962 Canadian Colossal



# 1963 Lindertis Evulse sold for record price of 60,000 gns





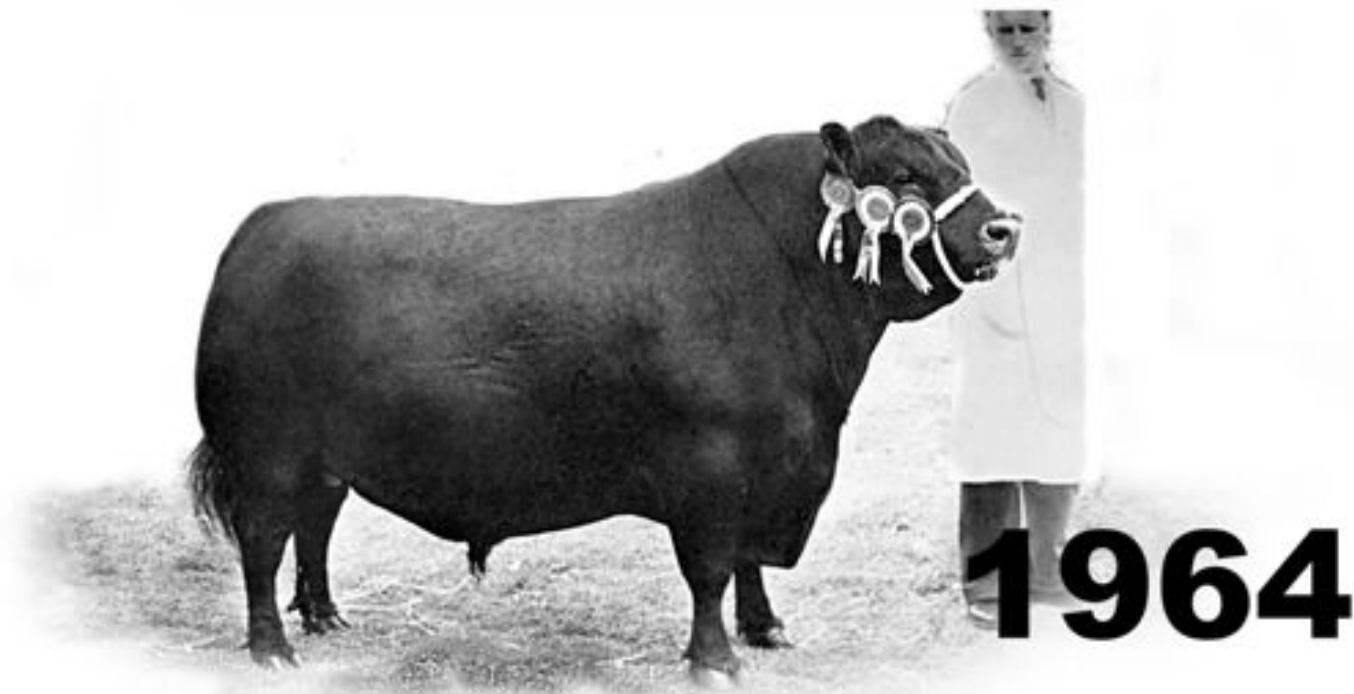
# 1964 Essedium of Douneside Perth Champion sold for 54,000 gns



# 1964 Esседium with Henry Durward setting off for U.S.A. (15 months old)



# Newhouse Jewror Eric Sold for 28,000 gns to Ashley



# Burke Trophy WINNERS 1967

Newhouse Jewdax Eric & Bamexma of Douneside



# 1968 Newhouse Edwin Elrick Perth Champion.



# Prediction of Haymount



**1969**

# 1972 First Angus cattle arrive from Canada



# 1976 Champion Highland John Gunn





# 1976 Highland Show Team



1976 one of first Canadian sired bulls in Perth from Ushaw



# 1976 Influence of Canadian Colossal



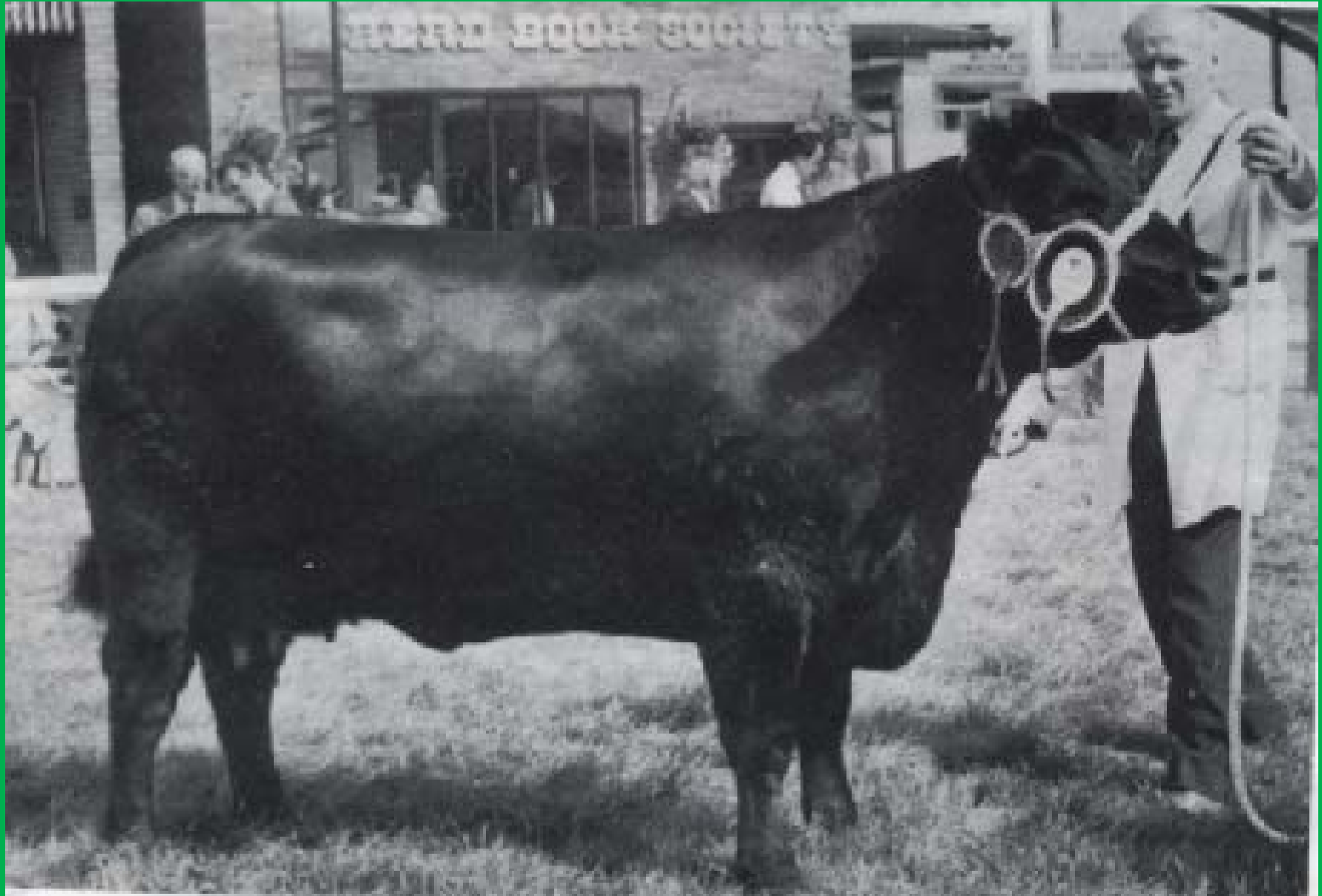
# 1979 Highland Show Team



# 1979 Royal Champion Palava of Thornton



# 1984 Royal Champion Netherton Frances E10



# 1985 Burthlene Patriot at 18 month



# 1988 TLA Northern Samurai as 2 yr old





# 1992 Perth Champion Netherton Fandango sire Samurai



# 1993 Leachman Right Time



# 1994 Highland Champion Wiwa Creek North Star



# 1995 T.C. Stockman 365 Used Worldwide



# 1996 Hoff Limited Edition 9 Yr old



# 1997 Rawburn Transformer



# 2002 Netherton Royal Sovereign N.Z Imported as embryo



# 2003 Justin Eric X47 of Blelack Interbreed Champion Royal Show





# 2004 Perth Champion Blelack Ellerman sold for 28,000 gns



**2004 Netherton Fleur Y298 sold for  
20,000 gns Female record price**



# 2005 Perth Champion Netherton Figo C244 sold for 30,000 gns



**2006 Rawburn Rommel sold for new  
Breed record £32,500 for ½ Share**



# 2006 Cardona Jewel Eric Perth Champion sold for 38,000 gns



# 2008 Penguin Mr Elevate sold for 32,000 gns



# 2010 Highland Champion Netherton Fleur D334



# Where to we go from here

- The slides you have seen show how the breed has changed over the past two centuries but where to we go from here.
- The next six slides demonstrate the extremes breeders have gone to .
- It is not for me to dictate what type we should breed but I will try and show where we went astray using the knowledge I have learned over the past 70 + years.



In this slide and the next both bulls are exactly the same age December born.



These two slides clearly show the extra growth we have achieved in 40 years



**This slide and the next show the difference in the mature size**



Both slides are of a cow and mature bull 30 years between.



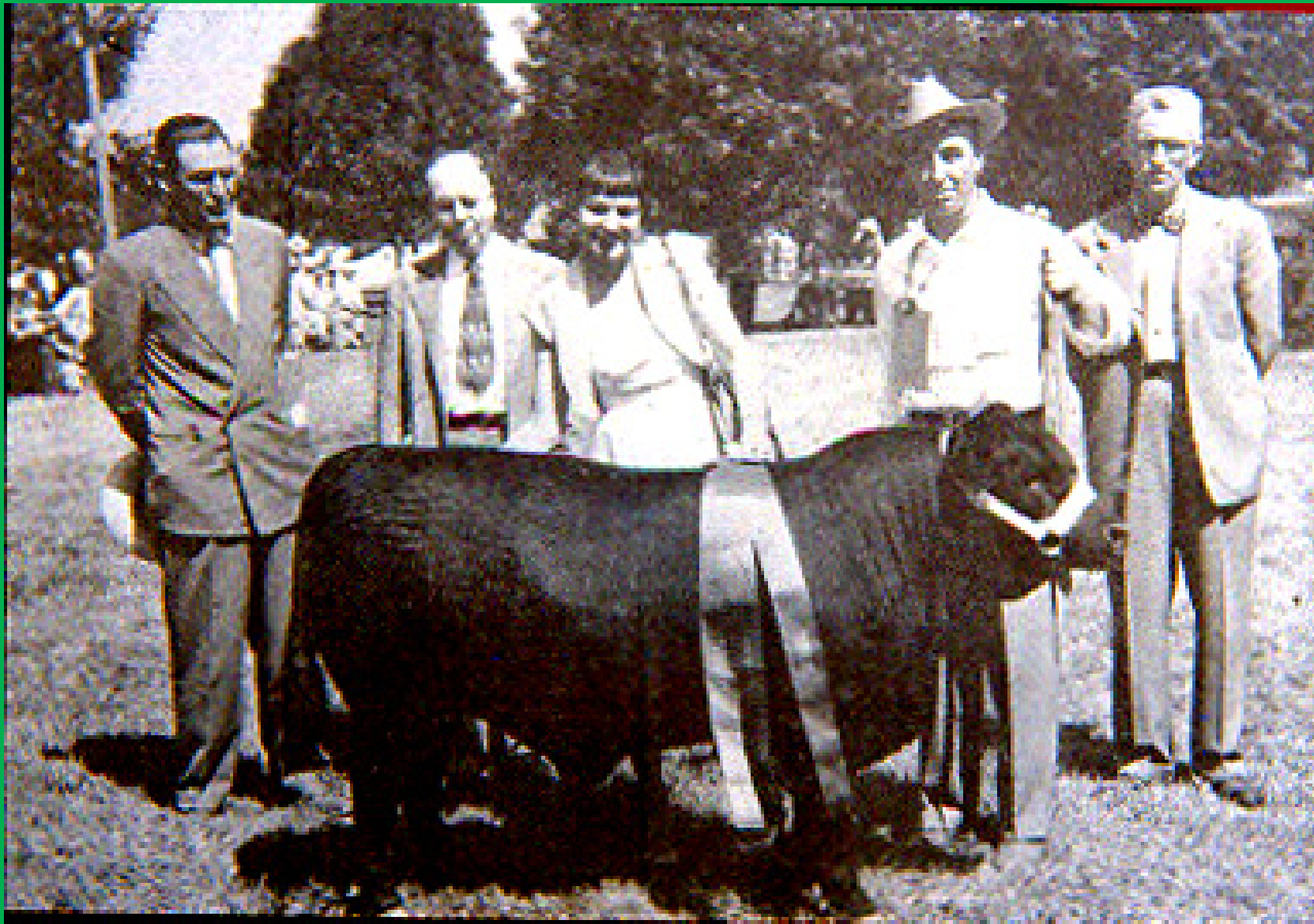
# Which way to we go from here ?

In a world where the population is rapidly growing and they require to be fed. We no longer can feed large amounts of cheap grain. We must have cattle that can convert feed from the less fertile areas efficiently into prime beef.

## (2) 1950's model

Do we go back to the 1950's model ? We could get something like this with a risk of breeding dwarfism.

# Do we return to the 1950 models



# 1980's Model

Should we  
breed extreme  
cattle like the  
cattle used in  
the 80's?



# 1988 Model



# 1950's Model

Do we go pure  
native with the  
1950's model,  
we could get  
cattle like this?

# 1954 Native Model



# Pre 1940's Model

Or should we go back to breeding the cattle like the type that were popular in the early 1900's?

# 1900 Native Model



# Your Choice

There is a whole lot of different types in the many countries where Angus are bred and it is the world pool of genetics that is at our disposal to breed the type required to suit the needs of the commercial producer in the country we live in.

Whatever type we choose they must suit the demanding needs of the consumers. If they don't we will not get a second chance.

It is up to breeders throughout the world to decide which type they want to produce. If they are to follow in the footsteps of the great master breeders who over the last two centuries have taken the breed forward into the 21<sup>st</sup> century.

Aberdeen Angus is now the dominant beef breed in all the major beef producing countries and in spite of what the Mail on Sunday and the BBC would have you believe it now stands second in the U.K for calves registered with BCMSs

# The Future

We must identify what our commercial producers demand and breed the type which will suit their customers.

I strongly urge breeders to look to the future and carry on the great legacy the masters have left us. We must take the breed forward through the 21<sup>st</sup> century and beyond using genetics from around the world. Look on the breed as a world breed, broaden your outlook and there is a bright future ahead if we grasp this opportunity.



# Looking to the Future



# Hallington Prince P454



# Rettie's Lady Ruth N288



# THE ABERDEEN-ANGUS CATTLE SOCIETY



➤ **WHO ARE WE?**

➤ **WHAT DO WE DO?**

➤ **HOW DOES IT ALL WORK?**



# THE ABERDEEN-ANGUS CATTLE SOCIETY

***“The Aberdeen-Angus Cattle Society will seek to maximise the opportunity for the use of pedigree Aberdeen-Angus stock”.***

***“Our business is your business”.***



The **ABERDEEN-ANGUS** Cattle Society

- **The Society is over 150 years old.**
- **Status, history and provenance second to none.**
- **From humble beginnings Aberdeen-Angus is now numerically the largest beef breed in the world.**
- **2500 Members registering over 16,000 pedigree calves per year**
- **Interestingly, approximately  $\frac{1}{3}$  Members in Scotland,  $\frac{1}{3}$  in England & Wales and  $\frac{1}{3}$  in Ireland.**
- **Latest BCMS Statistics make Aberdeen-Angus the second largest beef breed in the UK**



## The Council

**4 separate areas of UK with 3 elected members from each area on a three year term of office.**

**4 representatives from Ireland, 3 from the South and 1 from the North.**

**All Council Members are 'Directors of the Company'.**

**The 'Presidents' are elected at the AGM and their succession is subject to re-election at the AGM.**

**The President is effectively the Chairman of the Board.**



# Committee Structure and Reporting Procedures

**The Society has 6 separate Committees.**

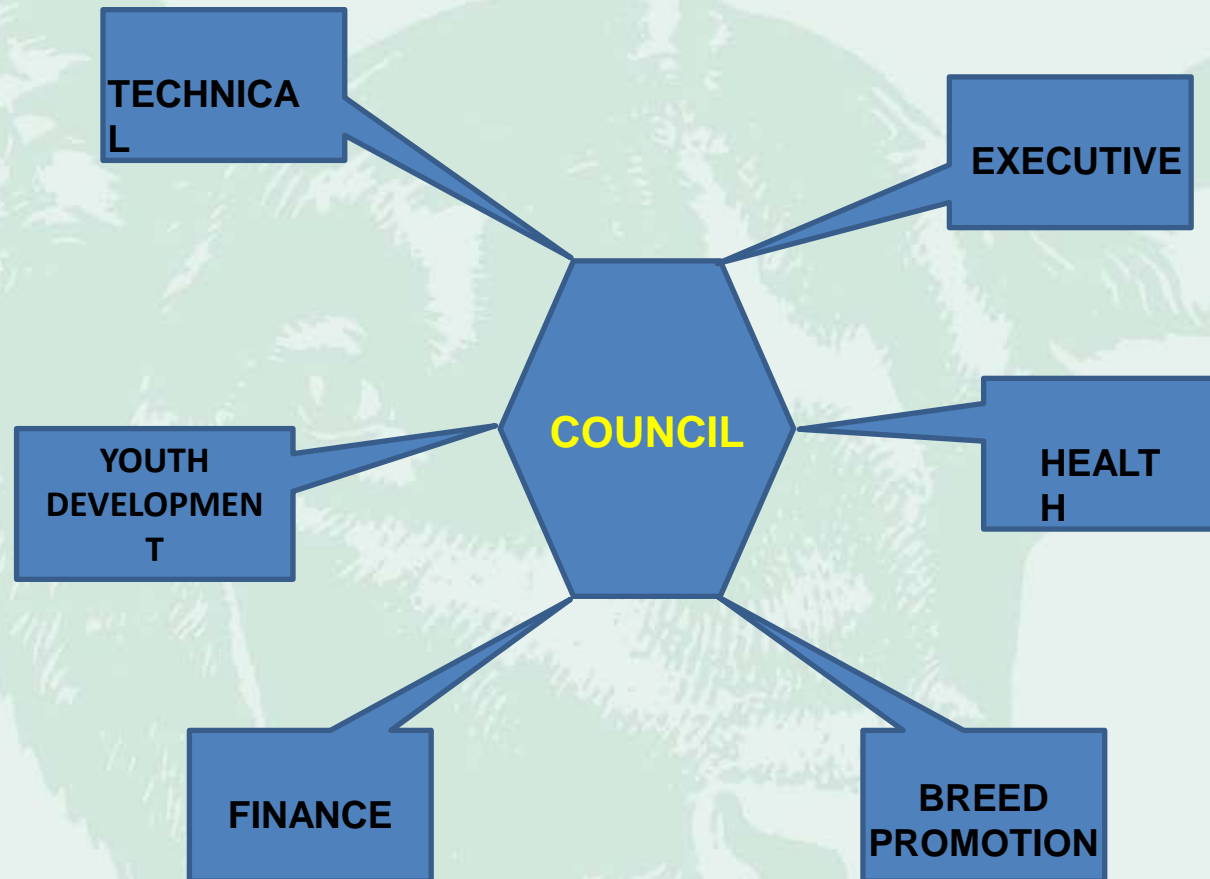
- **Finance**
- **Technical**
- **Health**
- **Breed Promotion**
- **Youth Development**
- **Executive**

**Council members are appointed to committees by expressing a wish or because of subject knowledge or expertise.**





# Committee Structure and Reporting Procedures



➤ **COMMITTEES DISCUSS AND RECOMMEND**

➤ **COUNCIL APPROVE OR NOT**



## How do you get your concerns raised and addressed?

- Call the office and speak to Barrie. There may be a simple answer but if not he will ensure it goes on the appropriate Committee or Council agenda.
- Get involved with your local breeders club. Discuss your concerns and brief your local Council Member.
- He or she will raise it at Council and get your issue discussed.
- The Society is a customer focussed democratically run organisation. It's yours to make use of.



**“Our Business is Your Business”**

*The **ABERDEEN-ANGUS** Cattle Society*

# COMMITTEES – ACHIEVEMENTS TO DATE.

## TECHNICAL:

- Society first to adopt ABRI's Breed Plan Performance Recording Programme.
- Pedigree Cattle Services Ltd, the Society's wholly owned subsidiary company now processes data for over 60% on the UK's Pedigree Beef sector on a contract basis.
- Currently developing Indices to promote financial merits of Aberdeen-Angus cattle in the commercial sector. Size is not necessarily the driver in today's economic environment.
- Heavily involved in the Breed Specific DNA Test for Aberdeen-Angus Beef in conjunction with *IDENTIGEN Ltd* and their *DNA Traceback.™* technology. This will have a major impact on the UK and export markets.



## CALVING AT TWO YEARS OF AGE

For example take two separate herds, each starting with 8 heifers, the first calving at 2 years of age and the second calving at three years of age. Assume for arguments sake that all heifer calves are retained for breeding and that the split between bull and heifer calves is 50:50.

| Year                           | Calving at 2 years old | Calving at 3 years old |
|--------------------------------|------------------------|------------------------|
| 2012                           | 8 calves born          | 0 calves born          |
| 2013                           | 8 calves born          | 8 calves born          |
| 2014                           | 12 calves born         | 8 calves born          |
| 2015                           | 16 calves born         | 8 calves born          |
| 2016                           | 22 calves born         | 12 calves born         |
| Total calves born over 5 years | 66                     | 36                     |



# COMMITTEES – ACHIEVEMENTS TO DATE.

## HEALTH:

- First to require all vendors at official sales to be members of a CHeCS approved Health Scheme.
- First to require that all cattle forward at Official Sales are tested and vaccinated for BVD.
- Society's 'Degree of Risk' model for classification of Johnes Disease now adopted by the industry.
- First to *RECOMMEND* that all cattle forward for Official Sales be vaccinated with a Marker Vaccine against IBR.
- WITHOUT YOUR HEALTH YOU'VE GOT NOTHING!



# COMMITTEES – ACHIEVEMENTS TO DATE.

## FINANCE:

- **Setting of budgets and monitoring financial performance.**
- **Overseeing investment portfolio and returns recieved there from.**
- **Considering eligibility of projects to be funded from annual surplus and their ability to deliver material benefit ‘for the good of the breed’.**
- **The Society is in robust financial health. Annual surplus on ordinary or core activities is in the region of £60,000. The balance sheet exceeds £2,000,000.**



# COMMITTEES – ACHIEVEMENTS TO DATE.

## YOUTH DEVELOPMENT:

- Simply the biggest and best Youth Development Programme in the UK and Ireland.
- Over 240 Youngsters trained annually and not all Angus breeders!
- The Society allocates over £20,000 per year to this leading industry initiative.



# COMMITTEES – ACHIEVEMENTS TO DATE.

## BREED PROMOTION:

Our success is driven by consumer demand. Our close relationship with the retail sector is paramount to our future.



**ABERDEEN ANGUS**

**“THE BREED BEHIND THE BRAND”**

YOUR **M&S** FARMING FOR THE FUTURE

**STODDART'S** Best in Beef

**Scotbeef**

The **co-operative** good with food

**Waitrose**

**abp** UK Perth Part of ABP Food Group

**ALDI**

**Sainsbury's TESCO**

**ANGUS** A language of collaboration.

**FINEST BRITISH BEEF** DOVECOTE PARK

Pedigree House, 6 King's Place Perth, Perthshire, Scotland, PH2 8AD  
Tel: +44 (0) 1738 622 477 Fax: +44 (0) 1738 636 436 www.aberdeen-angus.co.uk



The **ABERDEEN-ANGUS** Cattle Society



# CURRENT TOPICS OR WORK IN PROGRESS.

## ➤ BULL BUYERS QUESTIONNAIRE

- 700 questionnaires sent out , 380 returned.
- Lots of positives about our 'direction of travel'
- Some negatives
  - ease of calving?
  - progeny increasingly hard to finish?
  - feet and legs and mobility?



# CURRENT TOPICS OR WORK IN PROGRESS.

## FEED EFFICIENCY AND METHANE TRIALS

- Easter Howgate, Edinburgh (SAC)
- Greenhouse Gasses and Carbon Footprints
- Retailer asking the questions



## BULL QUALITY AT OFFICIAL SALES

- Heightened Inspection levels
- More Breeder Discipline



# CHANGE OVER A 44 YEAR PERIOD!



*The **ABERDEEN-ANGUS** Cattle Society*

# AND 44 YEARS LATER!



The **ABERDEEN-ANGUS** Cattle Society

# THEN AND NOW

1953

2018

- Beef (DW) 22p/kg 400p/kg X 18
- Cereals £29/Tonne £200/Tonne X 18
- Labour £280 per year £30,000 per year X 107
- Land £138/ Ha £17,000 per Ha X 123



1963 Lindertis Evulse sold for 60,000gns

Today's equivalent price 1,000,000gns



# In summary .....



We all have those days when we get a little stuck...



The **ABERDEEN-ANGUS** Cattle Society



...just remember, not everyone who shows up is there to help you.



The **ABERDEEN-ANGUS** Cattle Society

# Taylors Food Group

TAYLORS  
Regional Foods  
sourcing finest local foods



---

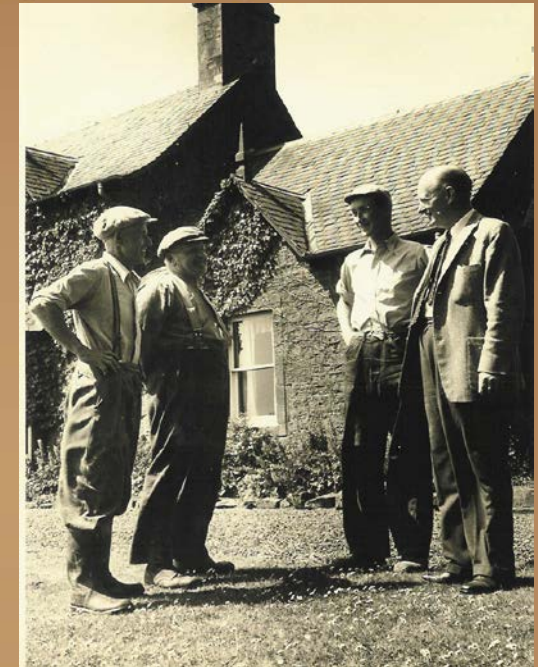
we're growing, grow with us



- The Taylor Food Group consists of a number of companies involved in Agri – business both at home and abroad.
- In business for over 85 years the companies are involved in all aspects of the food supply chain from Breeding, primary production, storage, packing and transportation of both raw material and finished goods.
- Operating from four sites across Scotland and Wales.
- Soon to open a new site at Errol which will be dedicated to the production of crisps and other potato based pre prepared products.
- Always looking for new opportunities!

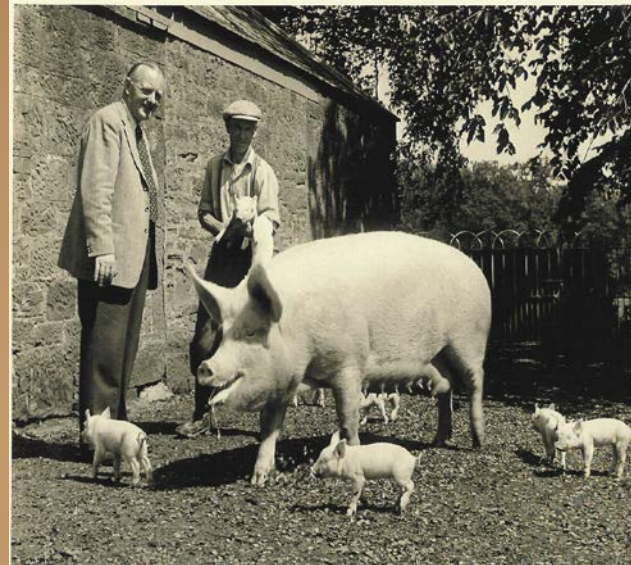
## 91 Years in Agri Business

- 1927 G C Taylor (Farms) Ltd.
- 1947 CSC Ltd.
- 1986 Taypack Potatoes Ltd.
- 1995 Taylor Transport Ltd.
- 2006 Continental Farmers Group Ltd.
- 2009 Mackies at Taypack Ltd.
- 91 years in Agri Business



## G C Taylor (Farms) Ltd – Early days

- Contracting
- Pig breeding
- CSC Ltd



# G C Taylor (Farms) Ltd

# Taylor's Food Group

- Cattle breeding.
- Cereal & Potato production.
- Heavy clay soils in the Carse.
- Temperature controlled storage.
- Property development.
- Seeking new opportunities.



# Taypack Potatoes Ltd

- 1986 – 2002 rapid development.
- £20 million invested.
- 2<sup>nd</sup> largest pack house in Scotland.
- 130,000 tonnes/annum capability.
- Ideal location.
- Currently 150,000 sq ft.
- Recent deal with IPL.
- 20 year lease.



# Taypack Innovation

- Investment in technology.
- Vertical form fill.
- Robotics.
- RFID tagging.
- Multi head weighing.
- Optical grading.
- Using same innovation in crisp business.
- Automation where possible.



## Taypack Innovation

- Rolling track grader.
- 400 tonnes per day.
- No fork lifts.
- RFID tagging on boxes.
- £2m investment in 2002.



# Taypack Breeding Programme

- Fully targeted potato breeding programme since 2005.
- James Hutton Research Institute, Dundee.
- Field trial stage with a number of crosses.
- First National listing.
- Mistay.





## Taylor Transport Ltd

- Dedicated transport fleet.
- Contracted to IPL Foods.
- Crisp transport.
- Handling crop in and out of pack house.
- Tracking and monitoring systems.



Taylor Transport Ltd

**Taylors**  
Food Group



## Continental Farming Group

- Ukraine – Some of the best land in the world.
- Flag represents grain growing under a blue sky!



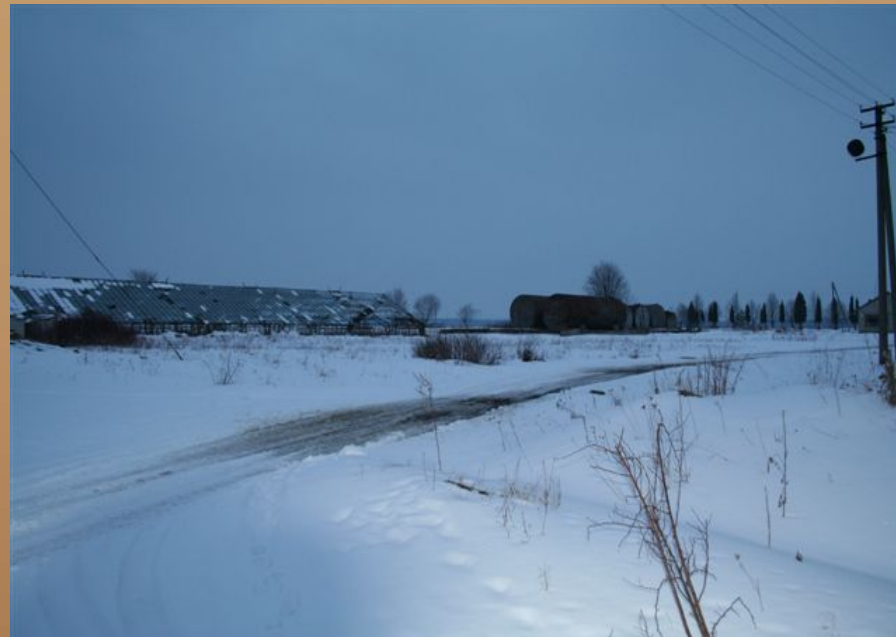
## Continental Farming Group

- 60,000 Hectares cropped in Western Ukraine.
- Major investment since 2006.
- AIM listed company.
- Cannot purchase land.
- All individual leases.
- After break up of Soviet Union land handed back to villages.
- Subsistence farming.
- Wheat, potatoes, OSR, Maize, Sugar Beet.
- Largest field 1000 hectares!

# Continental Farming Group

# Taylor's Food Group

Trying to dig ground in extreme  
Conditions in March 2005.



## Continental Farming Group

- Western Ukraine have ideal growing conditions with plenty of rain during the growing season.



# Continental Farming Group

# Taylor's Food Group

- Beautiful city of Lviv with architecture of many different countries.
- New airport will open the region up.
- Major change since 2006.
- Opera house in Lviv centre.



Continental Farming Group

**Taylor's**  
Food Group





# Continental Farming Group – year one.

# Taylor's Food Group



# Continental Farming - year one

**Taylor's**  
Food Group



Continental Farming Group

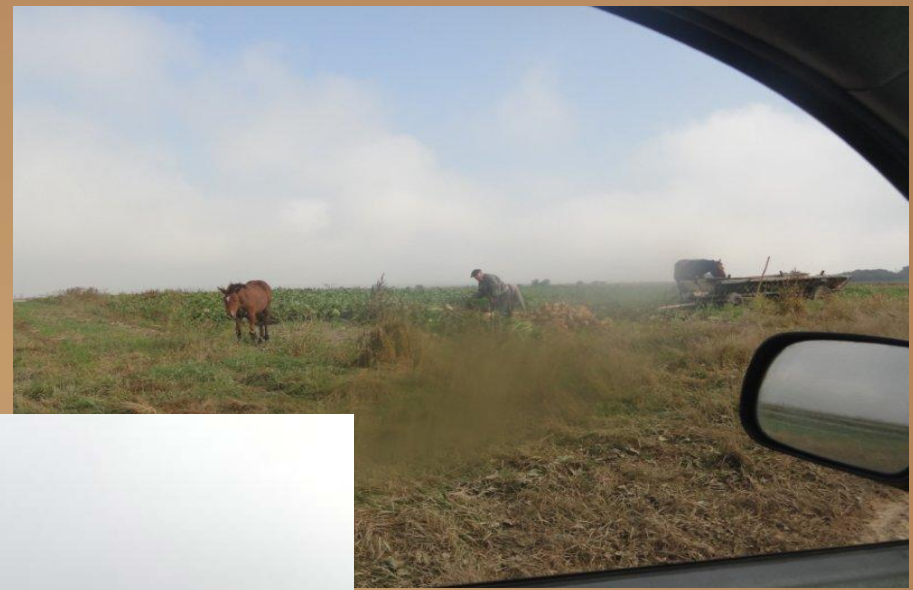
**Taylor's**  
Food Group



# Continental Farming Group

# Taylor's Food Group

- Sugar Beet harvest modern and traditional.



# Continental Farming Group

# Taylor's Food Group

- Potato Harvest.



# Continental Farming Group

# Taylor's Food Group

- Grain handling facilities.



Continental Farming Group

**Taylor's**  
Food Group

- 1000 hectare field!



# Continental Farming Group

# Taylors Food Group





# Continental Farming Group

# Taylor's Food Group



## Continental Farming Group

- Me and Mr Bialak on his livestock farm in far western Ukraine close to the Carpathian mountains.



# Mackie's at Taypack Ltd

**Taylors**  
Food Group

- Formed in 2009.
- JV between two farming families.
- Scotland's first premium quality crisp.
- Mackie's brand.
- Taylors facilities, location and expertise.
- Over £2.5 million invested.
- Unique processes.
- Rapid growth.
- Relocating to Errol in May 2013.
- Plans to open a visitor centre in next two years.

Award winning

**Taylors**  
Food Group



# Mackie's at Taypack Ltd

# Taylors Food Group



## UK Retail Space

- Tesco
- Asda
- Sainsbury
- Morrisons
- Co op
- Waitrose
- Aldi
- Lidl



# Mackie's Crisps – Around the globe



# Taylor's Branding launch in Wales 2013.

**Taylor's**  
Food Group



- Shelf standout
- Premium look
- High impact



# TFG Standards

**Taylors**  
Food Group

- BRC A grade for five years.
- VIBES Regional and National.
- ISO 14001 Environmental standard.

